

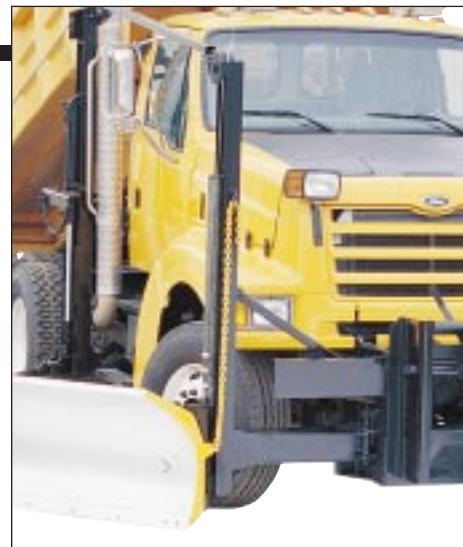
# Falls<sup>®</sup> Heavy Duty Snow Wing

TRUCK MOUNTED



FRONT MOUNTED

- Convert any truck (3-ton and up) into an efficient snow fighter.
- Clear up to 20 feet in one pass.
- Widening operations.
- Benching or shelving operations.
- Works in combination with one-way plows, reversible plows and V-plows.
- Maximize your machine and manpower.
- Rear mounted configuration available.



# Specifications



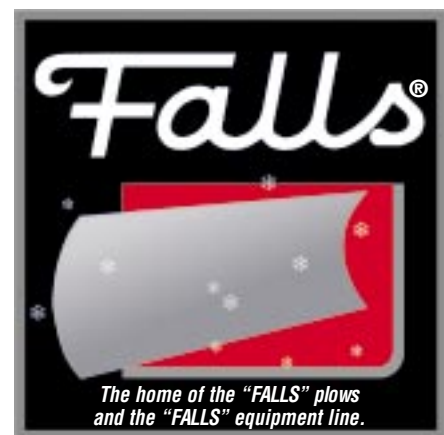
MODEL	W-10	W-11	W-12T
Overall length	10' 6"	11' 6"	12' 6"
Cutting edge (AASHO punched)	½" x 6" x 10'	½" x 6" x 11'	½" x 6" x 12'
Height of moldboard (front & rear)	30"		
Moldboard thickness	10 gauge Ex-ten 50 steel		
Lift height, front	54"		
Lift height, rear	104"		
Sweep angle	30° – 50°		
Weight of moldboard only	625#	675#	725#
Weight of Wing & mountings (approx.)	2020#	2090#	2145#

*Specifications are subject to change without notice.*

YOUR DEALER IS:

The policy and promise of Little Falls Machine, Inc. is continuing product improvement. Design change and structural alterations may occur without prior notice. Such changes will not sacrifice quality or product integrity.

Falls®, DirectLink™, and IceBreaker™ are trademarks of Little Falls Machine, Inc. Little Falls Machine, Inc. is an equal opportunity employer.



**LITTLE FALLS MACHINE, INC.**

300 Lindbergh Drive South  
 Little Falls, MN 56345  
 Phone 800-772-PLOW  
 (320) 632-9266  
 Fax (320) 632-3484  
[www.fallsplows.com](http://www.fallsplows.com)